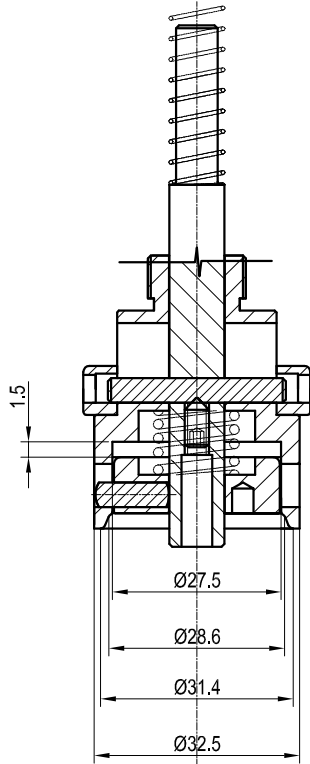
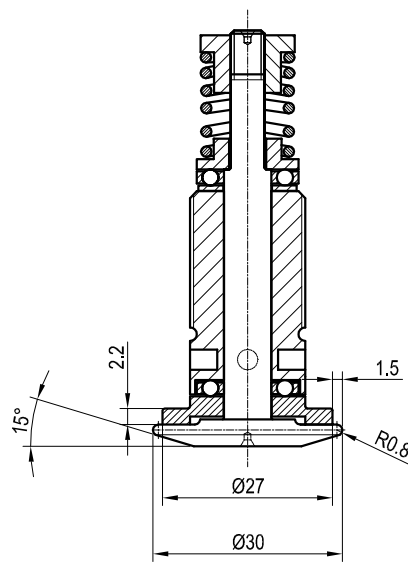


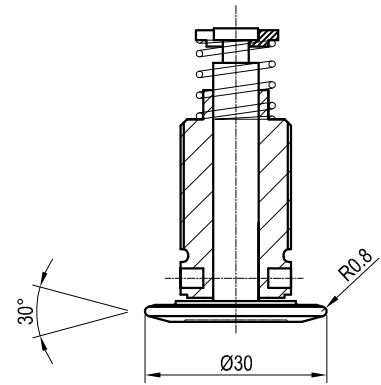
**PREMIOCAPSULA MOBILE
MOBILE PRESSURE BLOCK**



**RULLO BORDATORE STELCAP PER BVS
STELCAP TUCK-UNDER ROLLER FOR BVS**

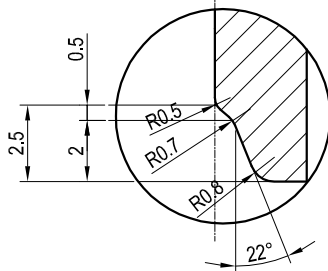


**RULLO FILETTATORE
THREAD ROLLER**



DETAILS RELATING TO THE CAP

Nominal dimension of the cap (D x h)	30x60
--------------------------------------	-------



DETAILS FOR THE APPLICATION OF THE CAP

Vertical load of the head on the cap	180 +/- 10 [Kg]
Side pressure of the threading rollers	Min. 8 [Kg] - Max. 10 [Kg]
Radius of the threading rollers	0.8 [mm] +/- 0.05 [mm]
Side pressure of the tuck-under rollers	Min. 8 [Kg] - Max. 10 [Kg]
Radius of the tuck-under rollers	0.8 [mm] +/- 0.05 [mm]
Reforming diameter	27.5 [mm] +/- 0.05 [mm]
Depth	1.5 [mm] +/- 0.1 [mm]

OPENING TORQUE (referred to laboratory conditions and dry glass bottles)

Slip torque (the torque required for the first rotation; disengagement of the liner from the bottles sealing face)	Min. 6 [lbs inc] - Max. 16 [lbs inc]
Break torque (the torque required to break the bridges) (*): 5% of the measured values may be up to a maximum of 20% over the reference limits	Min. 6 [lbs inc] - Max. 16 [lbs inc]
Resistance to static force on the head	Depending to the capping conditions, bottled products, CO2 gas volume, pasteurisation or sterilisation cycle, neck finish, etc.: quantifiable by a specific test client

